

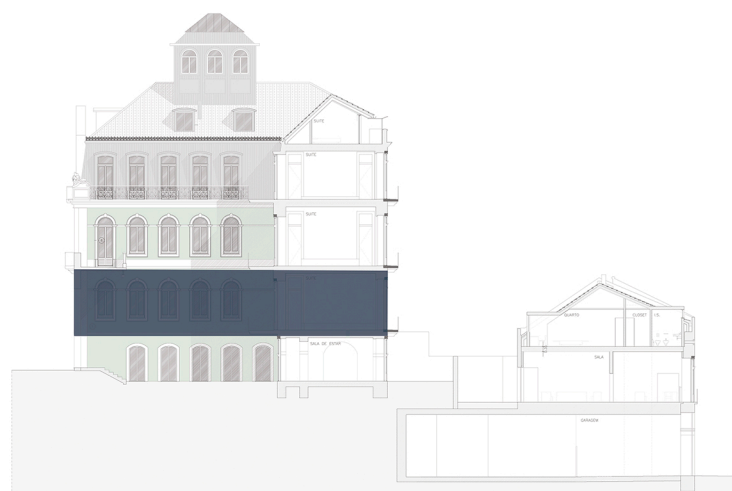
## APARTMENT C:

5 Bedroom Apartment

Interior area - 347 m<sup>2</sup> \*

Exterior area - 26 m<sup>2</sup>

2 parking places



\*Total interior gross area: corresponds to the total area of the apartment, measure by the outer perimeter of the walls and axes of the interior separating walls, not including terraces and balconies

The room areas indicated are measured by the inside perimeter of the walls and include the areas of the cabinets and closets